



**NIPPON
PAINT**

MozzieGuard

Premium Anti-Mosquito Paint

衛武士防蚊漆



Refresh your Life



Nippon Paint MozzieGuard

立邦衛武士防蚊漆



Nippon Paint is proud to introduce a new interior paint, MozzieGuard, in response to the constant threat of dengue fever, the resurgent threat of chikungunya fever, and the emerging threat of the Zika virus. All are transmitted by bites from infected Aedes mosquitoes.

立邦最新研發中心成功推出立邦「MozzieGuard 衛武士」防蚊漆，它是特別針對受感染的埃及伊蚊所引起的骨痛熱症和寨卡病毒引起嚴重問題的防蚊漆。埃及伊蚊一旦接觸到塗有衛武士防蚊漆的牆面將會被迅速擊倒，而不只是被驅散而已。這種無 N、N - 二乙基 - 間甲苯甲酰胺 (DEET - Free) 及低氣味的配方提供了一個既安全抵禦埃及伊蚊方案，同時保留其耐洗性和耐污性能。

Certified by Singapore Green Building Council (SGBC) as a Green Product NEA registered, Water-based formulation, Low-odour.

獲新加坡綠色產品認證，NEA 註冊以及水性低氣味。

Man's Deadliest Living Enemy, Mosquitoes

令人類死亡的元兇者 - 蚊子



Hong Kong's climate is sub-tropical, plenty of sunshine and comfortable temperatures. Dengue and Zika are transmitted by infected Aedes albopictus, they are still active during temperature over 10°C. Hong Kong has high risk of disease transmission more than half the year. Global warming, more deaths are caused by mosquitoes than any other living organism, our tropical climate, compounded by incessant construction and a dense urban population, makes an ideal mosquito breeding ground.

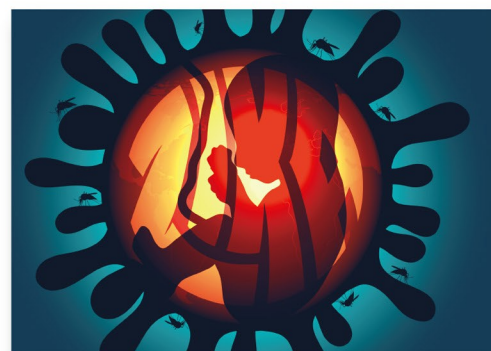
香港位處亞熱帶地區，白紋伊蚊繁殖迅速，傳播多種疾病如登革熱及寨卡病毒等，影響市民健康。由於蚊子在 10°C 以上依然活躍，香港大部份日子均受蚊患威脅，問題不容忽視。香港的蚊子多為「城市蚊」，鬧市中有積水就能繁殖；而隨著全球氣候暖化、大興土木、城市稠密人口，亦令蚊患日趨嚴重。

Dengue is an infection caused by chikungunya virus, a debilitating viral disease that is also transmitted by infected Aedes mosquitoes. The symptoms of infection include skin rash, fever, conjunctivitis, muscle or joint pain and general malaise. Department of Health of Hong Kong Government states the Dengue is an epidemic. There is no cure for dengue fever and chikungunya fever, only supportive care measures that relieve symptoms.

登革熱病是由基孔肯雅熱病毒(Chikungunya)引起的急性傳染病，病徵包括發燒、皮疹、結膜炎、肌肉或關節疼痛和疲累。登革熱病是由受感染的蚊子（如：白紋伊蚊）來傳染給人類的病毒。香港衛生署已將登革熱歸類為傳染病，現時並沒有疫苗或完全治癒登革熱及基孔肯雅病方法，只有將其病情舒緩。

Zika is a virus transmitted primarily by Aedes mosquitoes, the same vectors responsible for **dengue**.

寨卡病毒主要是經由伊蚊如白紋伊蚊來傳播，與登革熱傳病媒介一樣，同為蚊媒傳染病。主要透過受到感染的伊蚊叮咬而傳染給人類。



Zika virus causes Microcephaly
寨卡病毒感染引發小頭嬰兒

393 ZIKA

cases confirmed in Singapore
(as of December 2016)

新加坡於2016年共記錄得393寨卡病毒感染個案

11,924 DENGUE

cases reported since the start of the year
in Singapore (as of December 2016)

新加坡於2016年共記錄得11,924 登革熱個案

How MozzieGuard Technology Works

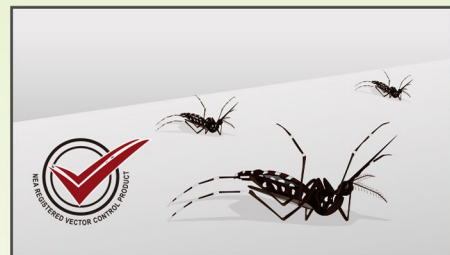
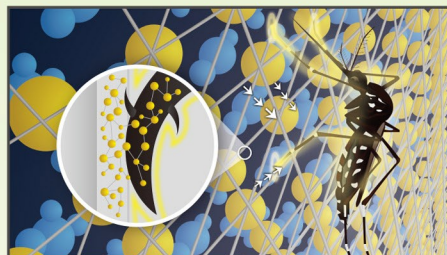
MozzieGuard技術

Mosquito Should Be Eliminated Rather than Repelled

有效滅蚊，不只驅蚊。

Nippon Paint MozzieGuard contains an encapsulated active ingredient that penetrates the mosquito's central nervous system upon contact with the painted surface. The unique active ingredient allows mosquitoes more time to stay on the painted surface without irritation, thereby providing a higher mass control of the mosquito population.

立邦衛武士防蚊漆使用獨特的滲透科技，當蚊子接觸牆面便能滲入蚊子中樞神經系統，牆面能持續性不斷發揮滲透作用，從而令居住環境中的蚊子數量也會減少。



Step 1 Surface is painted with Nippon Paint MozzieGuard.

步驟 1 塗上立邦衛武士防蚊漆。

Step 2 Mosquito is exposed to the active ingredient in the paint after landing on the painted surface. Active ingredient attacks the mosquito's central nervous system.

步驟 2 當蚊子停留於牆面並接觸衛武士防蚊漆後，活因子能滲入其中樞神經系統。

Step 3 Mosquito is knocked down, leading to paralysis and mortality.

步驟 3 蚊子被擊倒，癱瘓及死亡。

Efficacy of MozzieGuard (% of Mortality – Aedes Aegypti)

埃及伊蚊⁺死亡率及產品效能

>90% **Aedes Aegypti mortality**
埃及伊蚊⁺死亡率

The efficacy of Nippon Paint MozzieGuard has been proved by a certified 3rd party laboratory, which conduct tests in accordance with World Health Organization (WHO) test methods, Mosquitoes exposed to Nippon Paint MozzieGuard have achieved >90% mortality*.

立邦衛武士防蚊漆性能是根據世界衛生組織 (WHO) 的測試方法進行測試，獲實驗證明當蚊子觸碰到立邦衛武士防蚊漆後，蚊子有 >90% 的死亡率*。

Nippon Paint MozzieGuard certified by Singapore Green Building Council (SGBC) as a Green Product, and passed eye & skin sensitization safety tests#.

立邦衛武士防蚊漆同時獲得新加坡 SGBC 綠色產品認證及眼睛、皮膚敏感等安全測試#。



*Mortality test is conducted by Vector Control Research Unit (VCRU) in 2017.

#Tested by 3rd party laboratory "Jai Research Foundation" in 2017.

*Dengue is transmitted by infected Aedes albopictus which is under the category of Aedes.

伊蚊類中的白紋伊蚊已證實為傳播登革熱的品種。

Nippon Paint MozzieGuard Premium Anti-Mosquito Paint

立邦衛武士防蚊漆

Nippon Paint MozzieGuard is a special coating with insecticide encapsulated in the polymer for interior use. It has excellent knockdown property against mosquitoes through contact. It offers consumers a safe and convenient solution to fend off the mosquito and provide protective benefits to the community.

立邦衛武士防蚊漆是一種獨有擊倒及減少室內蚊子而研發的室內乳膠漆。當蚊子一經接觸漆面便有效地擊倒蚊子。立邦衛武士防蚊漆能提供一種安全及方便的方法抵擋蚊子騷擾，保護居住環境。

Outstanding Features 產品特點

- Excellent knockdown property against Aedes mosquitoes 有效擊倒黑斑類蚊子
- Good hiding 高效遮蓋力
- DEET-Free 無N、N - 二乙基 - 間甲苯甲酰胺
- Free from lead and mercury, low odour 不含鉛、汞及低氣味
- Good stain resistance 抗污性能佳
- Durable and washable film 耐用及耐洗擦漆膜
- Good fungus and mould resistance 有效防霉抗菌
- Easy application and touch-up 順滑易塗及良好修補性

Theoretical Coverage 理論覆蓋值

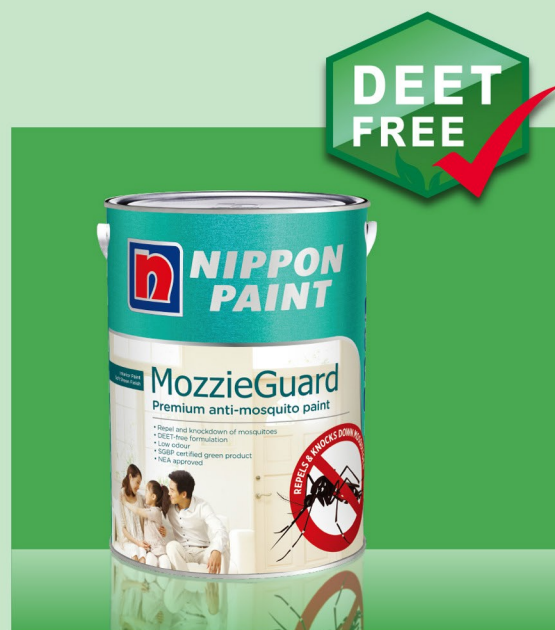
10-12 sq.m/litre/coat (35 microns DFT)
10-12 平方米/升/層 (乾膜厚度: 35微米)

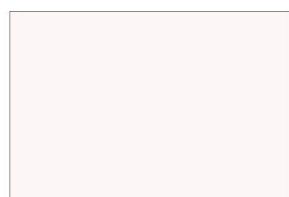
Drying Time 乾燥時間 (at 30 °C)

Touch dry 觸乾時間: 30 mins 30分鐘
Recoating 重塗間隔時間: At least 2 hours 最少2小時

Packing 包裝

5 Litres 5 升





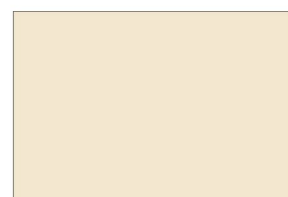
Felicia Rose MG7511



Soft Flutter MG7102



Green Veil MG7820



Coachlight MG7408



Restful MG7509



Morning Dawn MG7612



Elves Green MG7818



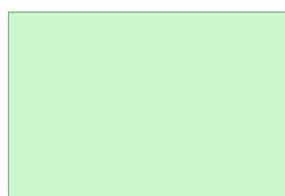
New Brick MG7405



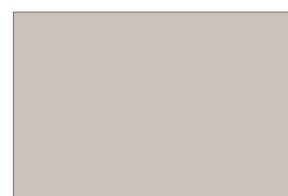
Grape Popsicle MG7510



Gold Dust MG7613



Secret Garden MG7819



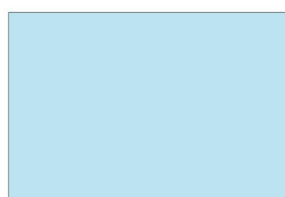
Winter Twig MG7407



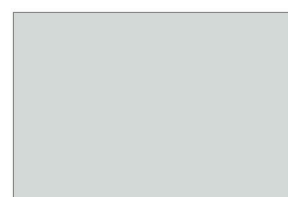
Wild Iris MG7204



Yellow Glove MG7715



Blue Music MG7922



Gray Suit MG7406



Snowbell MG7203



Bright Lime MG7716



Cool Wave MG7923



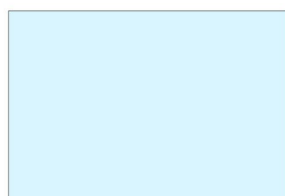
Aqua Glass MG7817



Sweet Wreath MG7101



Slight Embrace MG7714



Summer Ice MG7924



Quiet Lake MG7921

All colours shown are closest to the actual Nippon Paint Colours as modern printing techniques permit, for reference only. All colours are subject to the original paint colour. 本漆版是現代印刷技術所能印出最接近原漆的顏色，只作參考用途。一切顏色以原漆顏色為準。

MGXXXX are the standard colours which are available for this product only. It is also available in White colour.

MGXXXX 為標準顏色，只適用於此產品。另有白色可供選擇。

Dark colours are recommended the additional coats for best results.

深色顏色建議塗刷多遍，以達到滿意效果。

All colours shown in photographs may vary from actual paint colours due to lighting and printing.

由於攝影時的燈光及印刷技術之影響，相片中之顏色與實際漆油顏色有所不同。

i-Color Home Schemer

自家色彩設計師

"Nippon Paint i-Color Home Schemer" helps you preview any colour combination in your home before you actually start painting. Start by uploading an image of your room and you can start 'painting' your home with any colour of your choice.

You can simply open a photo from mobile tablet and edit your home with Nippon Paint's colours. Bring colour-matching tools at your pocket.

「立邦 i-Color 自家 • 色彩設計師」免費電腦配色軟件讓你可安在家中預覽任何顏色組合，透過上載自家居室相片，可以為居室塗上不同顏色。

下載流動平板應用程式，簡單開啟機內的相片就可為家居塗上 Nippon Paint 夢幻顏色。

Preview your home according to provided 32 colors from this card, mix and match in the software.

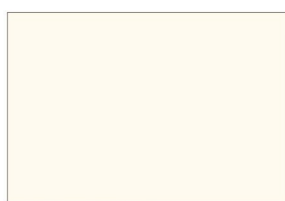
於軟件選取此產品色卡內提供的32種顏色自由配對，預覽家居色彩。



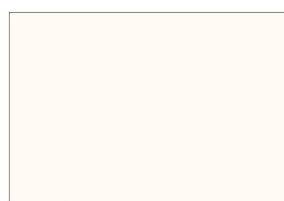
Creamy White / 粉透亮白系列



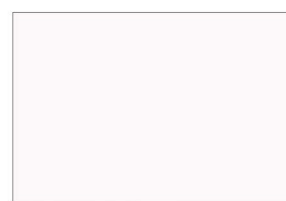
Peach White NP0001



Honey White NP0004



Pink Rose White NP0002



Eggplant White NP0008



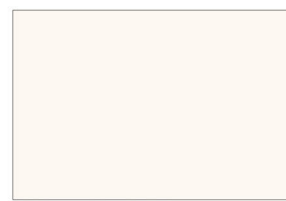
Green Apple White NP0005



Grass White NP0006



Sky White NP0007



Raspberry White NP0003

Nippon Paint Tinting Service

立邦配色服務

Nippon Paint aims to provide the most advanced technology for tinting service. Through the simple and convenient steps, the service facilitates the greatest flexibility for you to personalize your home with thousands of colour choices. All these can be right at your fingertip within just a few minutes!

立邦引進先進科技，利用電腦調校出逾千種顏色的『夢幻千色調色系列』。特快電腦配色，過程只需數分鐘，心水顏色立即呈現眼前，實現您想家居！

Select the Product & Colour Code
選擇產品及顏色編號

Paint Calculation
計算塗料用量

Order the paint at Nippon Paint Colour Creations Centres, your paint will be ready within 5-10 minutes.
到立邦配色中心訂購，調色過程只需5-10分鐘，快捷方便。

For the details of Nippon Paint Colour Creations Centres, please visit www.nipponpaint.com.hk

欲知全港立邦配色中心地址，可瀏覽網址 www.nipponpaint.com.hk





Recommended Application Areas 建議使用地方

Nippon Paint MozzieGuard is suitable for application on the walls and ceilings of the following at-risk rooms and buildings:

立邦衛武士防蚊漆適合用於牆身、天花，以及一些高蚊患地方。

- living areas
- kitchens
- bathrooms
- hallways
- bedrooms
- 客廳
- 廚房
- 浴室
- 玄關
- 臥室/睡房
- childcare centres
- schools
- semi exposed areas such as common corridors and void decks
- 兒童天地
- 學校
- 半露天地方，如：公共走廊、休憩地方
- all public buildings, especially those with frequently opened doors, windows and other entry points
- 所有公眾大廈，特別是經常出入或開啟的門窗及其他出入口



Technical Information

技術資料

Surface Preparation 表面處理

- Prepare unpainted surface 新建牆身:
Remove any dust, grease and loose matter. Surface should be clean, dry & stable.
清除表面灰塵、油脂和鬆散泥灰，如果有孔隙及時修補，確保牆面清潔乾燥和平整。
- Prepare painted surface 重塗牆面:
Remove old layers, dust and contaminant. Sand all glossy, rough or patchy surfaces.
剷除舊牆面不牢固的漆膜，清除表面灰塵粉化物和雜質，批平打磨，清洗並徹底乾燥。

Recommended Application 施工方法

- 1 coat of Nippon Paint Odour-less Color Sealer
一層立邦淨味幻彩底漆
- 2 coats of Nippon Paint MozzieGuard Premium Anti-Mosquito Paint
兩層立邦衛武士防蚊漆

Dilution 稀釋

- Using brush and roller - No dilution is necessary for best performance
刷塗或輥塗- 不必稀釋，使用前攪均即可。
- Stir well before use
使用前應攪拌均勻。

Paint Guide 施工教學



Related Products 配套產品



Nippon Paint Anti-Fungus Solution 立邦水性防霉劑

It serves to exterminate the fungus or algae
消滅生長於牆身表面的霉菌

Nippon Paint Odour-less Color Sealer 立邦淨味幻彩底漆

NIPPON PAINT (H.K.) CO., LTD.

Tel: (852) 2699 9333 Fax: (852) 2602 8844 Email: np@nipponpaint.com.hk

www.nipponpaint.com.hk

A MEMBER OF THE NIPSEA GROUP

