

NSE010
Exterior Effectual Prime Coat

NSI288
Interior Simply Essential
Skim Coat

ONE-STOP TOTAL SOLUTION



Excellent
Bonding



High
Compatibility



Excellent
Weathering
Resistance



Anti Carbonation

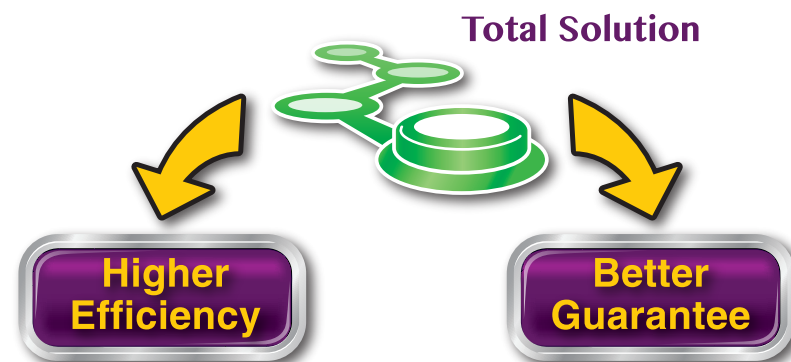


One-Stop
Solution

Highlight

Nippon Paint skim coat is a water-resistant plaster using premixed cementitious skim coat material modified with polymer.

One-Stop Total Solution



Compatibility Assurance

Substrate

Nippon Paint Skim Coat

Nippon Paint Paint Coat

Incompatible System

Nippon Paint Skim Coat System

Incompatible coatings may lead to adhesion failure

Enhance compatibility by making sure everything is compatible starting from Skim Coat to Paint Coating. Reduce the risk of compatibility or adhesion failure.

Anti-Carbonation

Nippon Paint Skim Coat Advantages

- Less CO₂ diffused to concrete
- Diminish the rate of carbonation
- Enhance the life span of concrete surfaces



Note:
The information given applies to the products and their performance under specific test conditions. Due to the varied circumstances beyond our control under which the product may be applied, for specific applications, please contact Nippon Paint Project Sales Department. We reserve the right to modify our product specification without further notice.

Technical Data (part 1)

Type	NSE010 Exterior Effectual Prime Coat	NSI288 Interior Simply Essential Skim Coat
Colour	White	
Application Method	Hand Troweling or Spraying	
Recommend Number of coat	1 - 2 coats	
Theoretical Coverage	0.8 - 1.0 kg/mm/m ² /coat	1.0 - 1.5 kg/mm/m ² /coat
Mixing Ratio	Powder : Water = 3.0 - 4.0 : 1	Powder : Water = 2.5 - 3.0 : 1
Drying Time	Touch Dry : 2 hours at 25°C	Touch Dry : 2 hours at 25°C
Over Coating Time	~ 6 hrs for applying second coat of NSE010 ~ 12 hrs for applying paint	~ 4-6 hrs for applying second coat of NSI 288 ~ 12 hrs for applying paint
Packing	25 kg	30 kg
Recommended Coating System	• NSE010 Exterior Effectual Prime Coat • Nippon Paint Exterior Painting System	• NSI288 Interior Simply Essential Skim Coat • Nippon Paint Interior Painting System

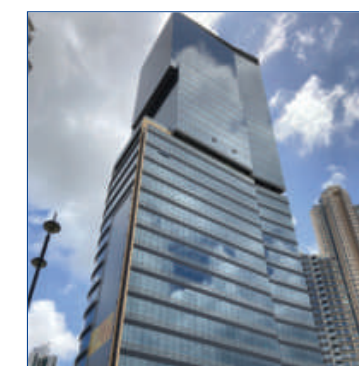
Technical Data (part 2)

Test Item	HKIA Requirement (Fin 7)	NSE 010 Exterior Effectual Prime Coat	NSI288 Interior Simply Essential Skim Coat
Initial Tensile Adhesion Strength BS EN 1015 : Part 12 : 2000	≥ 1.0 N/mm ² (Exterior) ≥ 0.5 N/mm ² (Interior)	1.2 N/mm ²	0.9 N/mm ²
Tensile Adhesion Strength After Water Immersion BS EN 1015 : Part 12 : 2000	≥ 0.7 N/mm ² (Exterior) ≥ 0.3 N/mm ² (Interior)	1.0 N/mm ²	0.5 N/mm ²
Tensile Adhesion Strength After Heat Ageing BS EN 1015 : Part 12 : 2000	≥ 0.7 N/mm ² (Exterior)	1.0 N/mm ²	N/A
Tensile Adhesion Strength After Freeze-Thaw Cycles BS EN 1015 : Part 12 : 2000	≥ 0.7 N/mm ² (Exterior)	1.8 N/mm ²	N/A
Compressive Strength at 28 days BS EN 1015 : Part 11 : 1999	5 - 12 N/mm ² (Interior)	N/A	5.4 N/mm ²
Water Retentivity BS 4551 : 2005	≥ 99 %	100%	100%
VOC Content USEPA Method 24	≤ 300 g/L	< 30 g/L	< 10 g/L

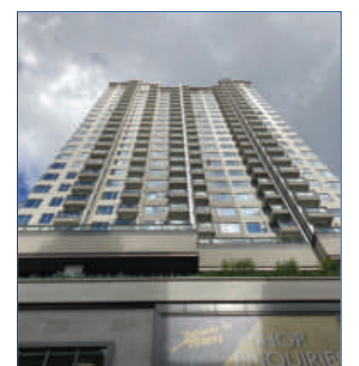
Job References



Shatin Hospital



Tsuen Wan Plaza 88



Down Tower 38