

Aquatec Silicone Cera S100

ANTI DIRT CRACK-BRIDGING EXTERIOR PAINT



Anti-dirt



Elasticity



Good Vapour
Permeability



Low Odor

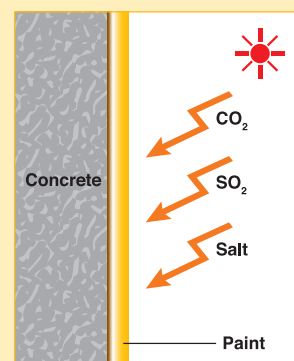


Excellent
Weathering
Resistance

Highlight

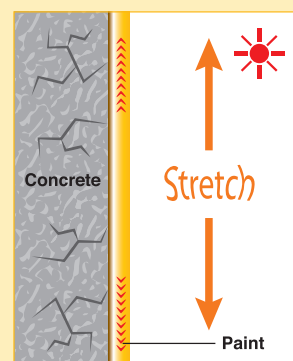
Nippon Paint Aquatec Silicone Cera S100 is a water-based exterior paint. It has excellent weathering resistance, gloss retention resistance and water resistance due to stable silicone resin.

Benefits



Silicone paint can prevent gases (especially CO₂, SO₂) & salts diffused to the internal layer of concrete, this reduces the risk of the steel being corroded. The corroded steel increases in volume and induces an expansion force which causes delamination and spalling to occur. Therefore, silicone paint would be helpful to avoid further deterioration of concrete.

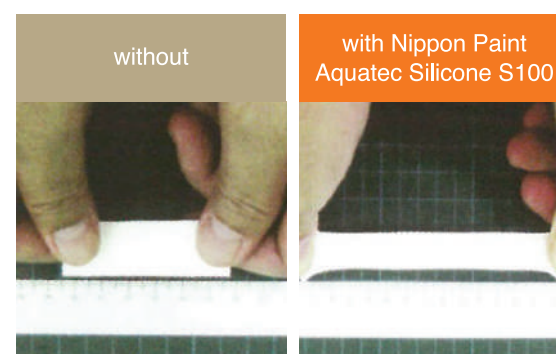
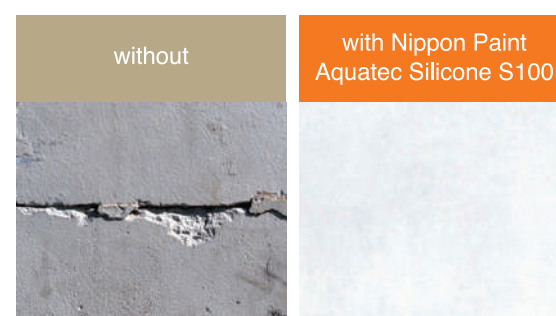
Aging



Silicone resin emulsion paint has long-lasting, excellent elasticity, high performance of water repellency and vapor permeability. Excellent elasticity property helps to prevent hairline cracks. Hence to keep in good condition and appearance, and reduce the effort in renovation or repainting.

Advantages

- ✓ Excellent weather resistance
- ✓ Excellent efflorescence resistance
- ✓ Excellent elasticity
- ✓ Colour retention
- ✓ Alkaline resistance
- ✓ Algae and fungus resistance
- ✓ Environmental friendly (water-based)



Technical Data

Type	Silicone Resin
Colour	Nippon Paint 1988 Colour Creations.
Finish	Matt/ Semi-Gloss
Application Method	<ul style="list-style-type: none"> • Brush • Roller • Spray
Theoretical Coverage	Theoretical: 0.15-0.16 kg/m ² Practical: Depends on substrate condition, application method etc.
Dilution	Max. 5-10% (using clean water)
Drying Time	Touch dry - 10 minutes (at 25°C) Dust Free - 30 minutes (at 25°C) Overcoat Time - ≥ 2 hours (at 25°C) The actual data may vary slightly depending on the application conditions, methods and surface conditions
Recommended Painting System	1 coat : Nippon Paint Ultra Sealer III 2 coats : Nippon Paint Aquatec Silicone Cera S100
Solid Content	24% by volume
Specific Gravity	1.23 (at 20 °C)
Packing	20 kg
Storage	Microbial contaminants cause paint to spoil. Keep excess paint clean, reseal lid and store in cool and dry place
Shelf Life	24 months in sealed original packaging stored at room temperature and shaded place
Surface preparation	Ensure surface is clean, dry and stable. Remove loose surface matter and contaminants by appropriate means. If necessary, anti-fungus solution is recommended to wash the infected areas. Do not paint when moisture content is above 6 % or 19 determined by protimeter and pH value is above 10. For spray application, use a cover to keep splashing paint away from other surfaces
Precaution	Avoid direct contact on sensitive skin. Use appropriate protective equipment

Job References



St. Anthony's Church



BMW House



CUHK - University Science Centre



CUHK - CW Chu College



CUHK - Cheung Ming Building