



**NIPPON
PAINT**

MILANO

立邦米蘭諾藝術漆

絲絨



Refresh your Life

安全環保 效果豐富

Nippon Paint Milano (Velvet Silver) 立邦米蘭諾藝術漆 (絲絨銀)

Nippon Paint Milano is a unique coating that combines a delicate velvety texture with a shiny metallic sheen. Its simple application technique transforms walls into sumptuous surfaces with a rich, fabric-like texture that brings a sense of luxury and elegance to the space. Available in an array of dazzling colors, it is ideal for decorating feature walls in bedrooms, living rooms, and other interior settings.

立邦米蘭諾絲絨藝術漆是一款具有細膩絲絨質感與低調奢華金屬光澤的特式塗料，透過簡單而特定的施工工藝，讓牆面呈現出如牆布般的立體層次，令空間帶來一份奢華典雅而又精緻的高貴感覺，並擁有絢麗多彩的色彩選擇，適用於睡房、客廳等背景牆的裝飾。

Theoretical Coverage 理論覆蓋值

- Top Coat 面漆：4-6 m²/kg/coat 4-6平方米/公斤/層
- Primer 底漆：7-9 m²/kg/coat 7-9平方米/公斤/層

Drying Time 乾燥時間

Touch dry 觸乾時間

- Top Coat 面漆：2hours 2小時
- Primer 底漆：1hour 1小時

Hard Dry 硬乾時間

- Top Coat 面漆：24hours 24小時
- Primer 底漆：2hours 2小時

Packing 包裝

2.4 kg/set (Include 1kg top coat, 1.4 kg primer, brush, spatula, stirrer)

2.4 公斤/套裝 (包括1公斤面漆、1.4公斤底漆、豬鬃刷、刮板、攪拌棒)



Outstanding Feature 產品特點



環保
Eco-Friendly
水性配方，安全環保



持久保色
Durable Color Retention
持久保色，色彩豐富



有層次感
Layering Effect
有層次感，立體感強



易施工
Easy Application
施工方便



壽命長
Long Lasting
不易變色，效果持久



無接縫
Seamless
牆面整體性強

Nippon Paint Milano (Velvet Silver)

立邦米蘭諾藝術漆 (絲絨銀)



YN0035-SRS3 法國乳酪



NN2670-SRS3 卡其天空



BN0005-SRS2 絲絨天幕



NN0039-SRS4 銀色空間

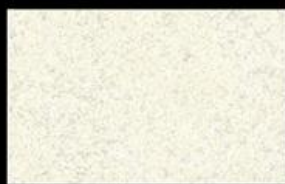


VN0140-SRS2 羅蘭花園

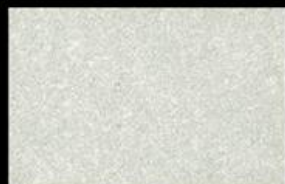
Colour Selection

顏色選擇

絲絨銀效果



絲絨銀 基礎



NN0039-SRS4 銀色空間



NN3507-SRS4 寒木春華



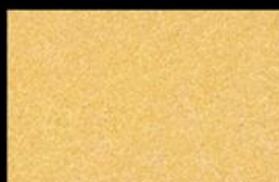
NN7340-SRS2 江南煙雨



YN0035-SRS3 法國乳酪



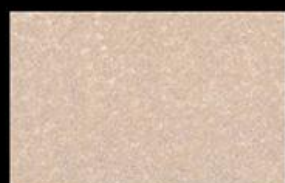
OC0071-SRS4 維C小調



ON2770-SRS3 金耀摩登



YN0075-SRS2 檸檬愛玉



NN0960-SRS4 提拉米蘇



NN2670-SRS3 卡其天空



BC6220-SRS3 空山新雨



GN5151-SRS4 草原精靈



BC6740-SRS2 星月童話



BC6710-SRS4 山亭夏日



BC5920-SRS3 蒼松翠柏



BC5940-SRS2 嫣然春色



BN0005-SRS2 絲絨天幕



NN7330-SRS2 金屬王國



BN7590-SRS1 暮色傾城



BA6700-SRS1 星空萬里



BN0003-SRS4 藍色河畔



RN0040-SRS2 兼朱重紫



VC0008-SRS3 浪漫風情



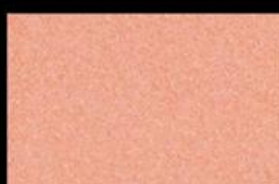
VN0140-SRS2 羅蘭花園



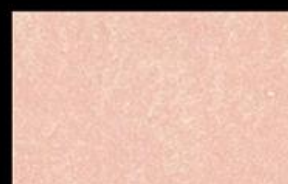
RN0025-SRS2 映日荷花



RC0290-SRS2 花燭紅妝



OC1680-SRS2 時尚紅橙



RN0014-SRS4 楊枝甘露

The colours shown on this color card are for reference only. All colours are subject to the original paint colour.
此色咭上所顯示的顏色只作參考用途，一切顏色以原漆顏色為準。

Application Method

施工步驟

STEP1 Roll on Primer 滾塗底漆

Tools: Roller
工具: 中短毛滾筒

Apply one coat of primer using a roller.
使用中短毛滾筒均勻滾塗一遍底漆。



STEP2 Brush on Top Coat 塗刷面漆

Tools: Stirrer, Brush
工具: 攪拌棒、豬鬃刷

Stir the paint gently for about 5 minutes before use to ensure it is well mixed. Dip the brush straight into the paint, but no more than one-third of the brush length to prevent excess paint. Apply one coat of topcoat using irregular criss-cross strokes at a 45-degree angle. Keep each stroke between 6–8 cm to maintain a smooth and natural finish.

使用攪拌棒上下攪拌面漆約5分鐘，使塗料充分混合。使用豬鬃刷蘸取面漆時，刷毛浸入塗料不超過三分之一，以避免過量。上料時，刷子與牆面保持45度以內，避免垂直操作造成施工痕跡，並使用交叉手法塗刷面漆，每次塗刷長度控制在6–8cm，儘量減少重複刷塗，以維持紋理自然。



STEP3 Brush for Texture 表面梳理

Tools: Brush
工具: 豬鬃刷

Brush upward at a 45-degree angle (± 10 degrees), starting from the lower left and moving toward the upper right to achieve a refined textured finish.

建議採用向上梳理手法，在45度正負10度角度內，從左下角向右上方向輕柔梳理，塑造細緻紋理效果。



STEP4 Smooth with Spatula 刮板整平

Tools: Spatula
工具: 刮板

Use a spatula to gently smooth the painted surface, applying steady strokes at a 45-degree angle from the top right to the bottom left, maintaining consistent direction. Hold the spatula lightly against the wall to minimize brush marks. Regularly wipe the spatula clean with a wet cloth to prevent mess. For the best results, avoid repeatedly working over the same area and aim to complete the entire wall without stopping.

使用刮板，從最初塗刷處開始刮塗，以45度斜向角度由右至左下進行，保持方向一致。刮板輕貼牆面，僅去除多餘刷痕，避免破壞紋理。每刮塗2–3次後，可用擰乾的濕毛巾輕擦刮板，保持工具潔淨。上料部位應一次完成，不宜反覆操作，以確保表面均勻，不要分段施工，一次過完成整幅牆，以呈現自然細膩的絲絨質感效果。



Nippon Paint Refresh Service 立邦刷新服務

Hotline 服務熱線 ☎ : 2699 9333

We provide a comprehensive one-stop renovation service where you do not need to worry about anything during the entire process. We offer high-quality product guarantees and all costs are standardized. Our professional construction team will handle the entire process and create an artistic atmosphere for your walls.

全面一站式的刷新服務，整個過程中完全不用讓您操心，為您提供優質產品保障。所有費用都屬於標準化收費，並由專業施工團隊施工，輕鬆為家居牆身打造藝術氛圍。

Technical Information 技術資料

Surface Preparation 表面處理

- Prepare unpainted surface 新建牆面：
Remove any dust, grease and loose matter. Surface should be clean, dry & stable.
清除表面灰塵、油膩和鬆散泥灰，如果有孔隙及時修補，確保牆面清潔乾燥和平整。
- Prepare painted surface 重塗牆面：
Remove old layers, dust and contaminant. Sand all glossy, rough or patchy surfaces.
剷除舊牆面不牢固的漆膜，清除表面灰塵粉化和雜質，批平打磨，清洗並徹底乾燥。

Recommended Application 施工方法

- 1 coat of Nippon Paint Milano Primer
一層立邦米蘭諾專業底漆
- 1 coat of Nippon Paint Milano Top Coat
一層立邦米蘭諾藝術漆

Dilution 稀釋

- Primer: Dilute with no more than 5% clean water (by volume) depending on actual application conditions.
底漆：可根據實際施工情況使用不多於5%(體積比)的清水稀釋。
- Top Coat: No water dilution is needed. Simply stir well and apply directly.
面漆：無需加水稀釋，攪拌均勻後可直接施工。

Paint Guide 施工教學



Related Products 配套產品

Surface Preparation 牆面處理



Nippon Paint Odour-less Wall Putty
立邦淨味批牆灰
Smoothing uneven substrates
修補及填平凹凸牆面



Nippon Paint Anti-fungus Solution
立邦水性防霉劑
Killing mould and algae
除霉殺菌



Selleys No More Gaps Multipurpose Gap Filler
犀利牌彈性填縫劑
A flexible and paintable gap filler, perfect choice for interior and exterior gap filling and swelling
可上油漆及具彈性，適用於室內及室外的縫隙填補

Surface Protection and tool 牆面保護及工具



Nippon Paint Masker Tape
立邦和紙保護膜
Good covering effect and convenient
周全保護，整潔方便



Nippon Paint Adhesive Tape
立邦和紙膠帶
Good colour separation and no residual glue
分色整齊，不留殘膠



Nippon Paint 4' GOLDEN PARTNER Roller
立邦4寸黃金搭擋面漆輔助滾筒
High efficiency and even finish
塗刷速度快，均勻細膩

即享nClub非凡體驗



NIPPON PAINT (H.K.) CO., LTD.

Tel: (852) 2699 9333 Fax: (852) 26028844 Email: np@nipponpaint.com.hk

www.nipponpaint.com.hk

A MEMBER OF THE NIPSEA GROUP



Nippon Paint Hong Kong



nipponpainthk